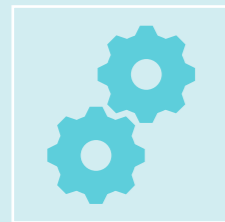


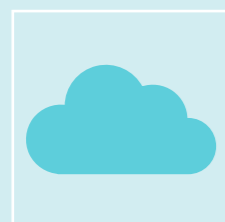
MS-012 Prepare your organization for Microsoft 365 Copilot

Summary

Examine the Microsoft 365 Copilot design



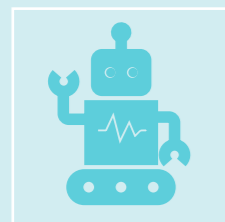
Microsoft 365 Copilot is an **AI-powered** tool designed to boost user productivity



Microsoft developed the underlying AI system that powers Microsoft 365 Copilot.

KEY Components of M365 Copilot

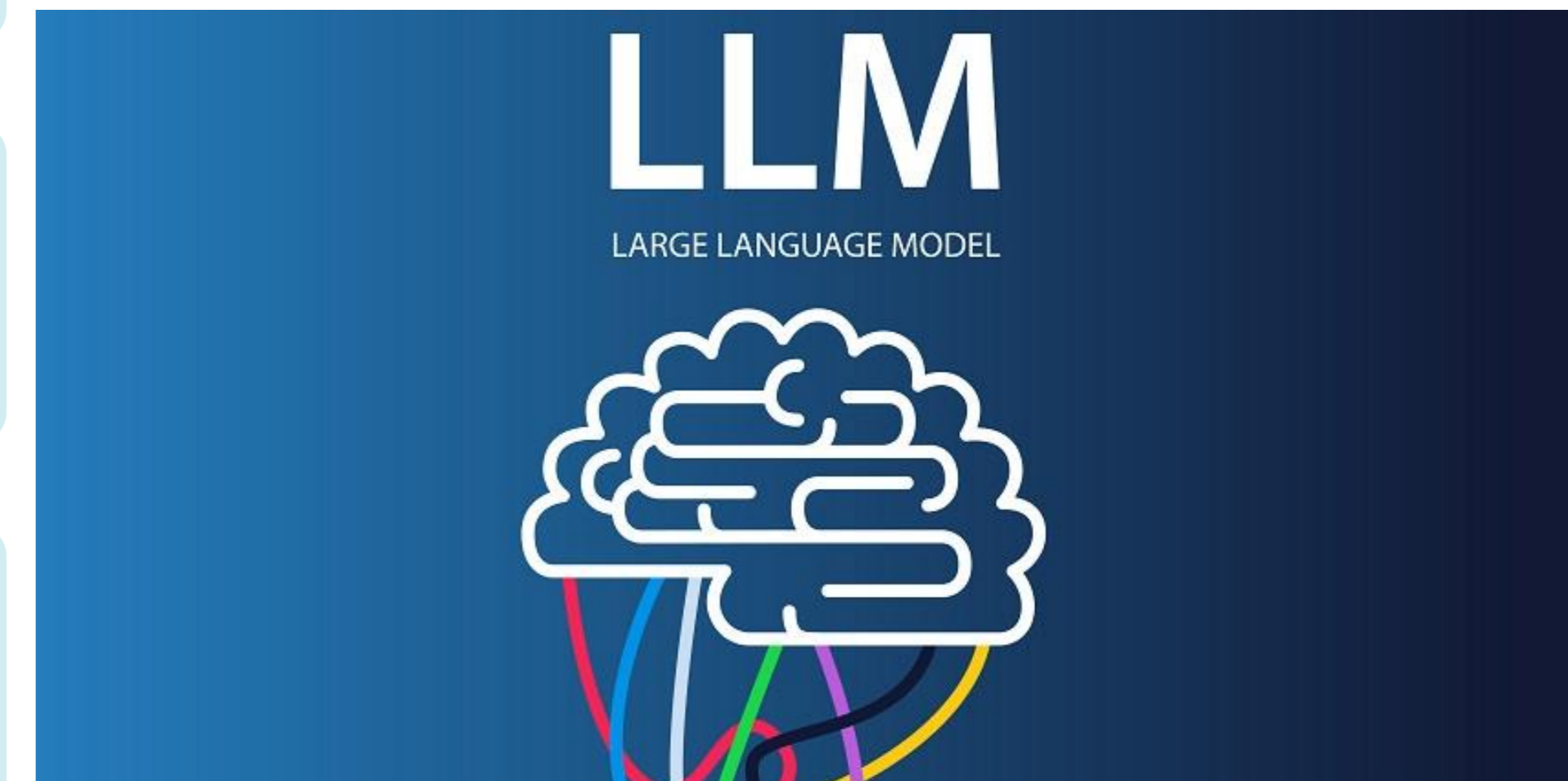
Aroh Shukla



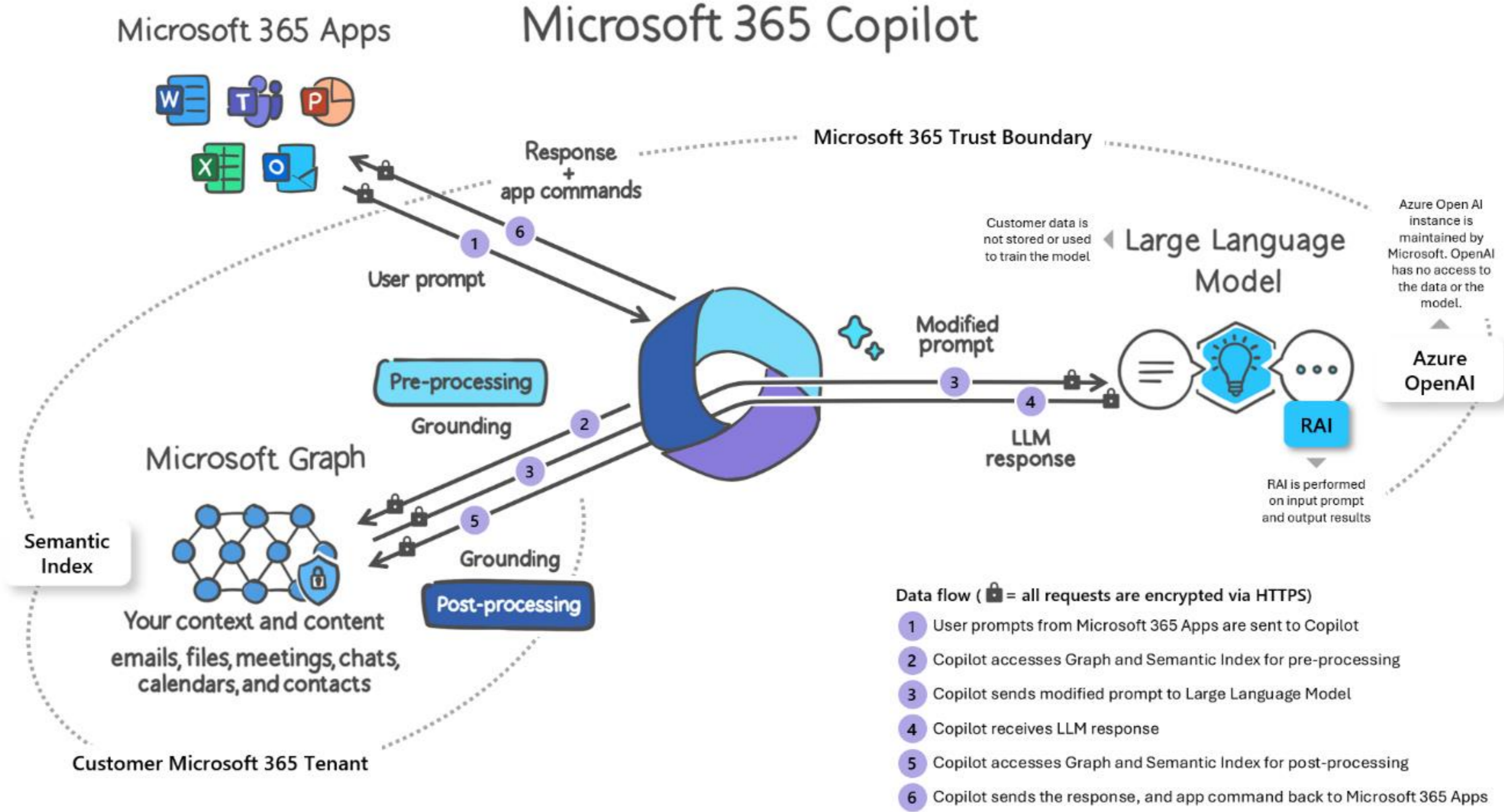
Large Language Models (LLMs). LLMs represent a class of artificial intelligence models



Natural Language Processing (NLP). Copilot's ability to read, comprehend, and generate text similar to how humans would.



The Microsoft 365 Copilot design - Diagram



Examine how Copilot uses the Semantic Index



COMPANY'S MASSIVE **SEMANTIC INDEX KNOWLEDGE GRAPH**



UNDERSTOOD BY MICROSOFT SERVICES LIKE BING AND MICROSOFT 365.

Aroh Shukla



SEMANTIC INDEX ENABLES MICROSOFT 365 COPILOT TO DELIVER RELEVANT, ACTIONABLE RESPONSES



SEMANTIC INDEX CONSTRUCTS THIS MAP BY ANALYZING CONTEXTUAL USAGE

Extend Copilot with Microsoft Graph connectors

Microsoft Graph connectors offer an intuitive way to bring data from external services.

With Microsoft Graph connectors, the data you bring in from your organization can be discoverable.

Microsoft Graph connectors include popular Microsoft & non-Microsoft services.

Aroh Shukla

Examples Azure services, Box, ServiceNow, Salesforce

Implement Microsoft 365 Copilot

Get ready for Microsoft 365 Copilot

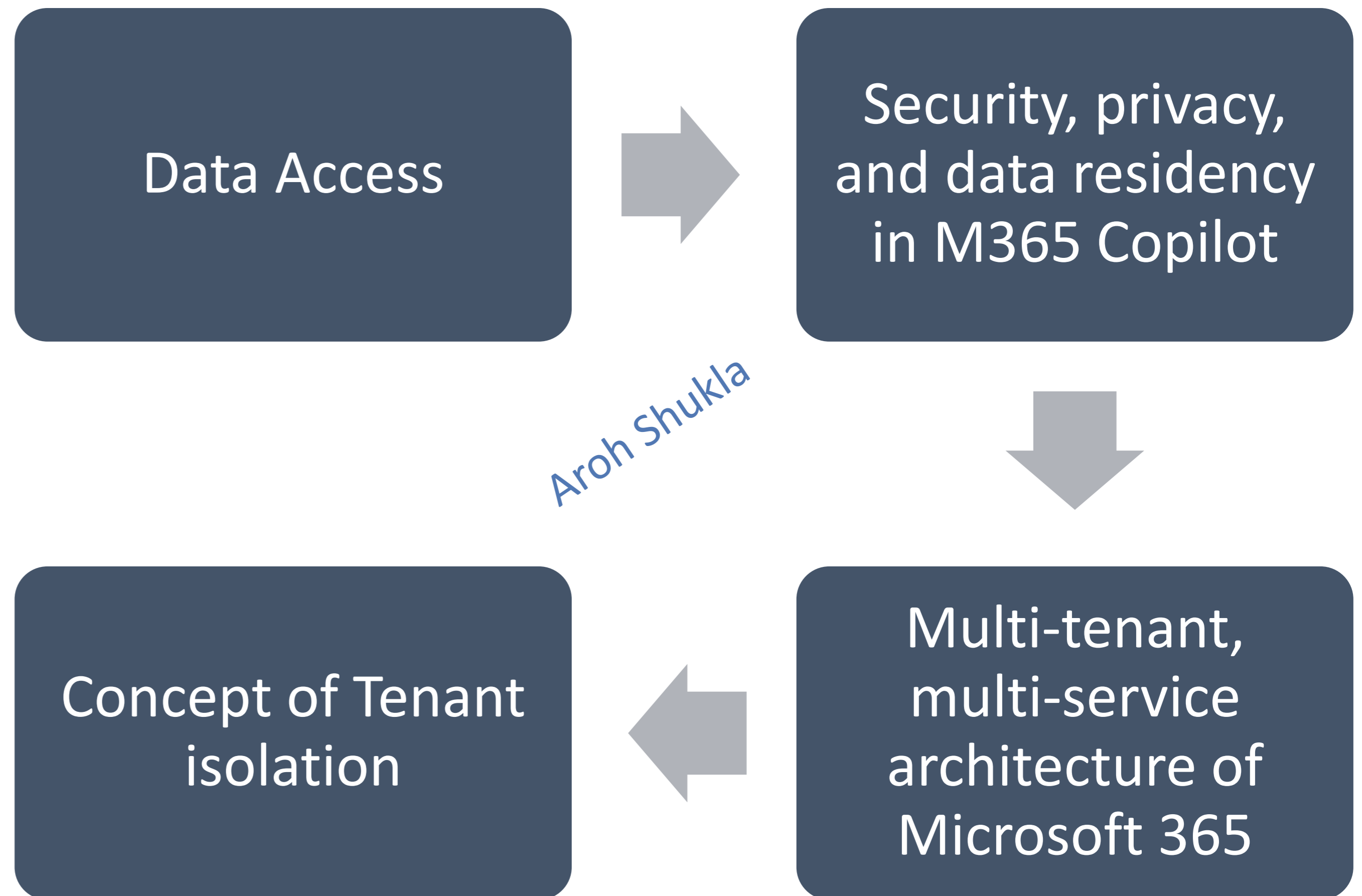
- Prerequisites for Microsoft 365 Copilot
- Preparing for the launch of Copilot

Prepare your data for Copilot searches

- Data preparation tips
- Data governance considerations

Aroh Shukla

Examine data security and compliance in Microsoft 365 Copilot



Data Isolation and Access Control

Exchange Online

Skype for business

SharePoint Online

Microsoft Teams

Aroh Shukla